

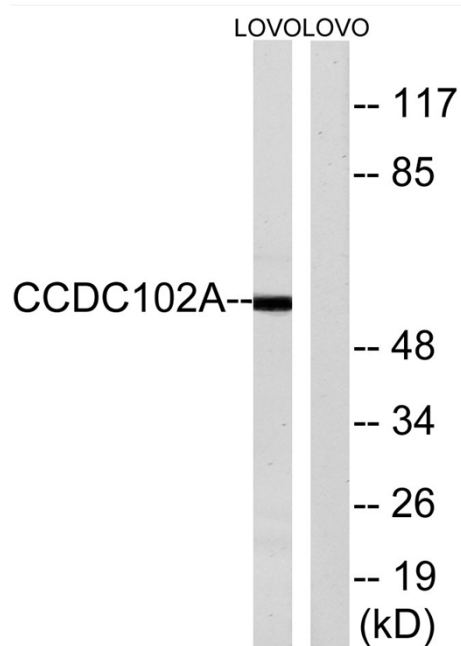


# CCDC102A Polyclonal Antibody

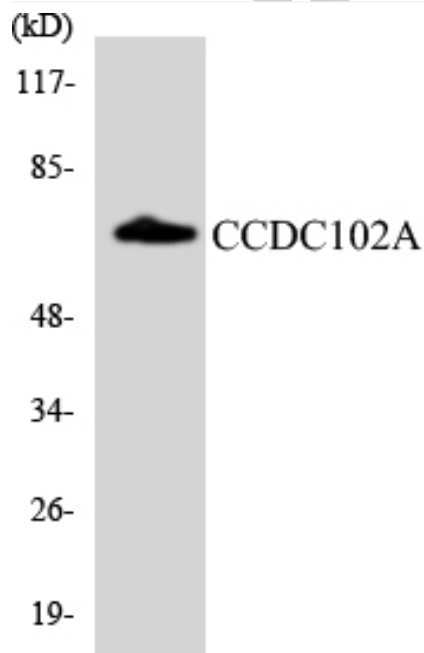
<b>Catalog No</b>	YP-Ab-01594
<b>Isotype</b>	IgG
<b>Reactivity</b>	Human;Mouse
<b>Applications</b>	WB;ELISA
<b>Gene Name</b>	CCDC102A
<b>Protein Name</b>	Coiled-coil domain-containing protein 102A
<b>Immunogen</b>	The antiserum was produced against synthesized peptide derived from human CCDC102A. AA range:341-390
<b>Specificity</b>	CCDC102A Polyclonal Antibody detects endogenous levels of CCDC102A protein.
<b>Formulation</b>	Liquid in PBS containing 50% glycerol, 0.5% BSA and 0.02% sodium azide.
<b>Source</b>	Polyclonal, Rabbit,IgG
<b>Purification</b>	The antibody was affinity-purified from rabbit antiserum by affinity-chromatography using epitope-specific immunogen.
<b>Dilution</b>	Western Blot: 1/500 - 1/2000. ELISA: 1/20000. Not yet tested in other applications.
<b>Concentration</b>	1 mg/ml
<b>Purity</b>	≥90%
<b>Storage Stability</b>	-20°C/1 year
<b>Synonyms</b>	CCDC102A; Coiled-coil domain-containing protein 102A
<b>Observed Band</b>	55kD
<b>Cell Pathway</b>	myosin complex,
<b>Tissue Specificity</b>	Brain,Placenta,Uterus,
<b>Function</b>	
<b>Background</b>	CCDC102A (Coiled-Coil Domain Containing 102A) is a Protein Coding gene. An important paralog of this gene is CCDC102B.
<b>matters needing attention</b>	Avoid repeated freezing and thawing!
<b>Usage suggestions</b>	This product can be used in immunological reaction related experiments. For more information, please consult technical personnel.



## Products Images



Western blot analysis of lysates from LOVO cells, using CCDC102A Antibody. The lane on the right is blocked with the synthesized peptide.



Western blot analysis of the lysates from HepG2 cells using CCDC102A antibody.